

Canon

J35ex 11B IASD J35ex 15B IASD

*The New Worldwide Standard for Portable Telephoto Featuring
Digital Drive and Ecological Design*



DIGITAL DRIVE
DD

J35ex 11B IASD (11-385mm 1:2.0)

J35ex 15B IASD (15-525mm 1:2.7)

DIGITAL DRIVE
DD

The New Worldwide Standard for Portable Telephoto Featuring Digital Drive and Ecological Design

The long anticipated J35ex11B IASD / J35ex15B IASD has arrived!

Canon proudly introduces our new portable telephoto lens series; the long anticipated "J35ex11B IASD & J35ex15B IASD". The new series is the successor to the J33ax11B/15B IASD; the world's most popular portable telephoto lenses since 1991.

The compact J35ex11B achieves the longest focal length in its class, 385mm (the J35ex15B achieves 525mm) and at the same time, features a new Ecological Design harmless to the environment. Furthermore, the advanced features of the Digital Drive servo system enable you to use the diverse digital functions, precisely, easily and fully.

An ideal telephoto lens with the longest focal length in its class!

By introducing the J35ex11B/15B, Canon presents the world's new standard in field portable lenses with superior optical performance and highly improved specifications.

The lens achieves a long focal length, exceeding the 363mm of its predecessor, the J33ax11B and at the same time, the size and weight of the lenses are almost the same. The advantages of keeping the size and weight as small as possible expand the possible applications of the lens, especially for the sports, news, documentary and surveillance markets.

The exceptionally high optical performance that Canon provides is a matter of pride. Generally, color aberration and corner performance vary with the movement of the front elements when focusing and is most recognizable at long focal lengths. However, due to employment of an internal focusing system, these aberrations have been decreased to the smallest amounts possible. Thus, there is no difference in performance from infinity to M.O.D., which is a long distance considering field use.

Keeping in mind field use, color blur has been diminished at the tele end, which is very important point with lenses for this application. Even when using the built-in

2X extender, a sharp picture without color blur has been achieved. Distortion has been reduced while at the same time, corner MTF has been maximized. This has been achieved through the use of optical design techniques accumulated over many years as well as the unique Canon developed optical design program and simulation program for optical performance analysis.

The J35ex11B/15B series is designed to meet the high demands of all field production applications. The lens will surely lead you to a higher standard of production.

Canon's Ecological Design

It is Canon's policy to not pollute the earth and though research we are quickly reaching the goal.

The J35ex11B/15B series has avoided using any materials or substances that could pollute the environment. Optical parts, featuring lead free glass are designed to be completely non-polluting and the mechanical parts are virtually free of all harmful products to the earth.

Digital Drive Unit

The newly developed Digital Drive system provides many outstanding features.

Shuttle Shot

By memorizing any two focal lengths, the Digital Drive can automatically "Shuttle"

between the two points, moving in either direction.

Framing Preset

An angle of view can be present in memory and the lens will zoom to that position by pushing a simple button. During a performance, framing preset will reproduce the zoom position decided upon at the rehearsal. It's easy to repeat the same zoom as often as you like at the highest speed or in a preset zoom speed.

Speed Preset

A specific zoom speed can be preset in memory and it is possible to repeat the zoom speed as often as you like by pushing a simple button.

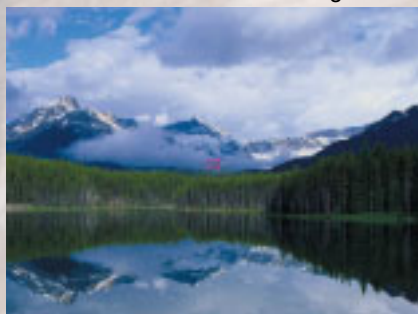
Zoom mode select

One of several selectable operation curves can be chosen which will allow different zoom movement characteristics when operating the rocker switch.

New digital demands series

In addition, Canon is introducing a new Digital Zoom Demand, the ZSD-300D. The new demand will be able to operate the shuttle shot (Shtl) and Frame Preset (Frame) functions. The ZSD-300D will be connected to the lens via a new one-touch 20pin connector. All current analog controllers are fully compatible with Digital Drive lenses.

f=11mm at the widest angle



Zoom

f=385mm at the narrowest angle



Quiet Servo Operation



Return Switch
Framing preset Switch
Speed mode change over Lever

Memory Switch
Zoom operation Switch



Compact Size is achieved
Mass **4.5kg (9.9lbs)**

Built-in 2X Extender

Long Focal Length 11-385mm/15-525mm
(22-770mm/30-1050mm With 2x Ext.)
Is Achieved With Reduced Distortion.

High and Flat MTF

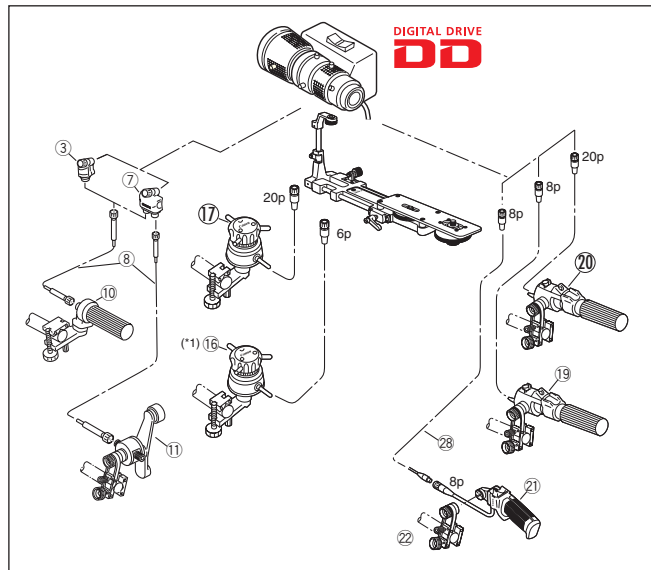
- Realization of high contrast in all areas of the picture (center~corner).

SPECIFICATIONS

J35ex11B IASD	NORMAL 4:3		16:9	
	1.0X	2.0X	1.0X	2.0X
Built-in Extender	1.0X	2.0X	1.0X	2.0X
Range of Focal length	11-385mm	22-770mm	11-385mm	22-770mm
Zoom Ratio	35x			
Maximum Relative Aperture	1:2.0 at 11~226.5mm 1:3.4 at 385mm	1:4.0 at 22~453mm 1:6.8 at 770mm	1:2.0 at 11~226.5mm 1:3.4 at 385mm	1:4.0 at 22~453mm 1:6.8 at 770mm
Angular Field of View	43.6° x 33.4° at 11mm 1.31° x 0.98° at 385mm	22.6° x 17.1° at 22mm 0.65° x 0.49° at 770mm	47.1° x 27.6° at 11mm 1.43° x 0.80° at 385mm	24.6° x 14.0° at 22mm 0.71° x 0.40° at 770mm
Object Dimensions at M.O.D.	161.9x121.4cm at 11mm 4.7x3.5cm at 385mm	81.0x61.0cm at 22mm 2.4x1.8cm at 770mm	176.8x99.5cm at 11mm 5.1x2.9cm at 385mm	88.4x49.8cm at 22mm 2.6x1.5cm at 770mm
Minimum object Distance (M.O.D.)	2.2m (MACRO 50mm)			
Approx. Size (WxHxL)	169.5(W)x143(H)x316(L)mm			
Approx. Mass	4.5kg(9.9lbs)			

J35ex15B IASD	NORMAL 4:3		16:9	
	1.0X	2.0X	1.0X	2.0X
Built-in Extender	1.0X	2.0X	1.0X	2.0X
Range of Focal length	15-525mm	30-1050mm	15-525mm	30-1050mm
Zoom Ratio	33x			
Maximum Relative Aperture	1:2.7 at 15~301.5mm 1:4.7 at 525mm	1:5.4 at 30~602mm 1:9.4 at 1050mm	1:2.7 at 15~301.5mm 1:4.7 at 525mm	1:5.4 at 30~602mm 1:9.4 at 1050mm
Angular Field of View	32.7° x 24.8° at 15mm 0.96° x 0.72° at 525mm	16.7° x 12.6° at 30mm 0.48° x 0.36° at 1050mm	35.5° x 20.4° at 15mm 1.05° x 0.59° at 525mm	18.2° x 10.3° at 30mm 0.52° x 0.29° at 1050mm
Object Dimensions at M.O.D.	118.3x88.7cm at 15mm 3.5x2.6cm at 525mm	59.2x44.4cm at 30mm 1.8x4cm at 1050mm	129.2x72.7cm at 15mm 3.8x2.1cm at 525mm	64.6x36.4cm at 30mm 1.9x1.1cm at 1050mm
Minimum object Distance (M.O.D.)	2.2m (MACRO 50mm)			
Approx. Size (WxHxL)	169.5(W)x143(H)x330(L)mm			
Approx. Mass	4.5kg(9.9lbs)			

CONTROL ACCESSORIES



(*1) Ⓜ CC-2006 conversion cable is necessary to connect between IASD Digital Lens and FPD-400.

Applicable Kit Detail

Kit Name	Zoom		Focus	
	System	Component	System	Component

for J35eX15B IASD, J35eX11B IASD

Zoom Servo Only		Zoom System	Zoom Component	Focus System	Focus Component
	--	ZR-1	⑱*	--	--
	--	ZR-1D	⑳	--	--
	--	ZR-2(A)	㉑* ㉒ ㉓	--	--
Semi-Servo	--	ZR-1	⑱*	FR-2	③ ⑧ ⑩
	--	ZR-1D	⑳	FR-2	③ ⑧ ⑩
	--	ZR-2(A)	㉑* ㉒ ㉓	FR-2	③ ⑧ ⑩
Full Servo	SS-41-IASD	ZR-1	⑱*	FPS-4	⑬ ⑳
	SS-41-IASD	ZR-1D	⑳	FPS-4D	⑰
	SS-42-IASD	ZR-2(A)	㉑* ㉒ ㉓	FPS-4	⑬ ⑳
Full Manual	--	FZC-1	⑦ ⑧ ⑪	FR-2(w/o ③)	⑧ ⑩

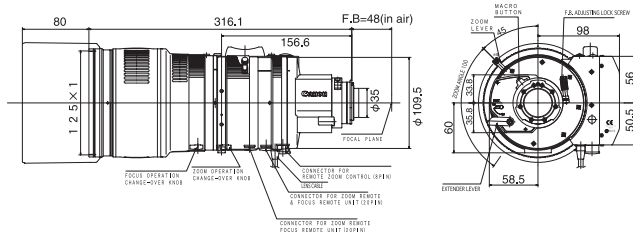
* If a ZSD-300A Demand or ZSG-200A Grip will be used with a DD (Digital Drive) B3 mount lens, please contact a Canon office for special operating instructions.

⑱ Recommended Kit Configuration for the Digital lenses.

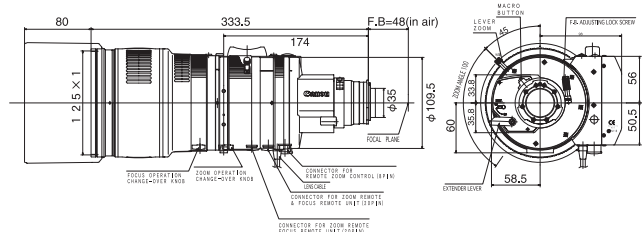
● The controllers support the new DD functions.

DIMENSIONS

J35ex 11B IASD (Unit:mm)



J35ex 15B IASD (Unit:mm)



North & South America

Canon U.S.A., Inc.
Broadcast and Communications Div. (Headquarters)
400 Sylvan Avenue Englewood Cliffs, NJ 07632
Tel:(201)816-2900/(800)321-4388
Fax:(201)816-2909
Email:bctv@cusa.canon.com
http://www.canonbroadcast.com/

Chicago

100 Park Blvd. Itasca, IL 60143
Tel:(630)250-6231 Fax:(630)250-0399

Atlanta

5625 Oakbrook Pkwy. Norcross, GA 30093
Tel:(770)849-7895 Fax:(770)849-7888

Los Angeles

15955 Alton Parkway Irvine, CA 92618
Tel:(949)753-4330 Fax:(949)753-4337

Dallas

3200 Regent Blvd. Irving, TX 75063
Tel:(972)409-8871 Fax:(972)409-8869

Latin America

Tel:(954)349-6975 Fax:(201)816-2909

Canada

Canon Canada, Inc.
Optics Division
6390 Dixie Road
Mississauga, Ontario, L5T 1P7, Canada
Tel:(905)795-2012 Fax:(905)795-2140

Europe/Africa/Middle East

Canon Europa N.V.
Broadcast and Communications Div.
Bovenkerkerweg 59-61
1185 XB Amstelveen
Tel:+31(0)20-5458905 Fax:+31(0)20-5458203
Email:tvprod@canon-europa.com
http://www.canon-europa.com/tv-products

Australia

Canon Australia Pty. Ltd.
Optical Products Division
1 Thomas Holt Drive, North Ryde, NSW 2113,
Australia
Tel:+61(0)2-9805-2000 Fax:+61(0)2-9805-2444

China

Canon (China) Co., Ltd.
Optical Products Division
15F South Tower, Beijing Kerry Center, 1 Guang Hua
Road,
Chao Yang District, 100020, Beijing, China
Tel:(010)8529-8488 ex 133 Fax:(010)8529-6606
http://www.canon.com.cn

Asia/Japan

Canon Inc.(Broadcast Equipment Group)
20-2, Kiyohara-Kogyo-Danchi, Utsunomiya-shi,
Tochigi-ken, 321-3292, JAPAN
Tel:+81(0)28-667-8669 Fax:+81(0)28-667-8672